



THE GUITAR LESSON COMPANION

by Susan Palmer

Volume One, Second Edition

TABLE OF CONTENTS

PART ONE: STANDARD MUSIC NOTATION

	PAGES
INTRODUCTION	6
HIGH E STRING, WHOLE, HALF, QUARTER, DOTTED HALF NOTES	7-11
B STRING, WHOLE, HALF, QUARTER, AND DOTTED HALF RESTS, 3/4 TIME	12-16
COMBINATION STUDIES FOR E AND B STRINGS	17-20
G STRING, BEAMED AND SINGLE EIGHTH NOTES	21-25
COMBINATION STUDIES FOR E, B, AND G STRINGS	26-29
D STRING, TIES, DOTTED QUARTER NOTES	30-34
COMBINATION STUDIES FOR E, B, G, AND D STRINGS	35-38
SHARPS AND FLATS	39-40
A STRING, EIGHTH RESTS	41-46
COMBINATION STUDIES FOR E, B, G, D, AND A STRINGS	47-50
LOW E STRING, EIGHTH AND QUARTER NOTE TRIPLETS	51-55
COMBINATION STUDIES FOR E, B, G, D, A, AND LOW E STRINGS	56-59
SIXTEENTH NOTES AND RESTS, AND TRIPLETS	60
INTRODUCTION TO READING IN DIFFERENT POSITIONS	61
FIRST POSITION	62-74
FIFTH POSITION	75-87
SEVENTH POSITION	88-100
EIGHTH POSITION	101-113
TWELFTH POSITION	114-126

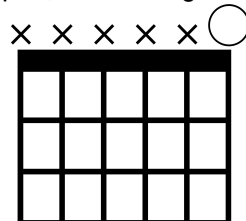
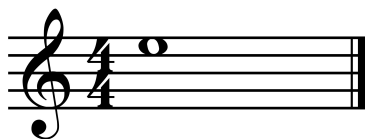
PART TWO: CHORDS, SCALES, AND THEORY

INTRODUCTION	127
OPEN CHORDS AND TRANSITION EXERCISES	128
12 BAR BLUES IN THE KEY OF A	129-130
OPEN CHORDS, PROGRESSIONS, SCALE PATTERNS, AND EAR TRAINING	131-135
FINGERSTYLE PATTERNS	136
POWER CHORDS	137-138
BARRE CHORDS	139-140
SEVENTH CHORDS	141-144
THE CAGED SYSTEM FOR CHORD SHAPES AND SCALE PATTERNS	145-146
TRIAD INVERSIONS	147-148
MINOR PENTATONIC AND MAJOR SCALE PATTERNS	149-150
THE CHROMATIC SCALE AND MAJOR SCALE CONSTRUCTION	151-152
THE CIRCLE OF FOURTHS AND FIFTHS	153
CHORD CONSTRUCTION	154-155
HARMONIZING THE MAJOR SCALE	156
TRANSPOSING COMMON CHORD PROGRESSIONS	157
MASTER THE MAJOR SCALES ON THE GUITAR FRETBOARD	158
CHORD CHART	159
CHORD FAMILIES, FORMULAS, AND SYMBOLS	160

Volume One, Second Edition

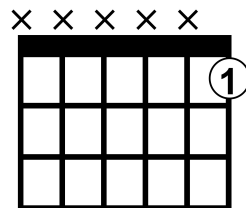
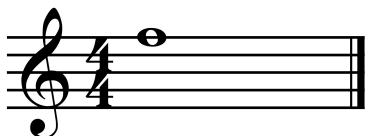
E is the thinnest string played open, with no fingers.

E =



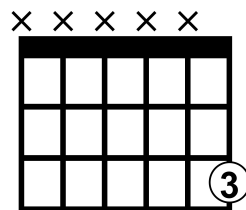
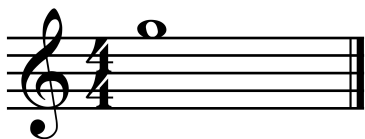
Place the tip of your first finger behind the first metal fret.

F =



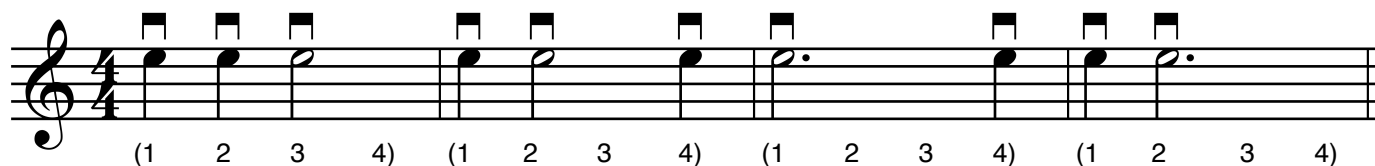
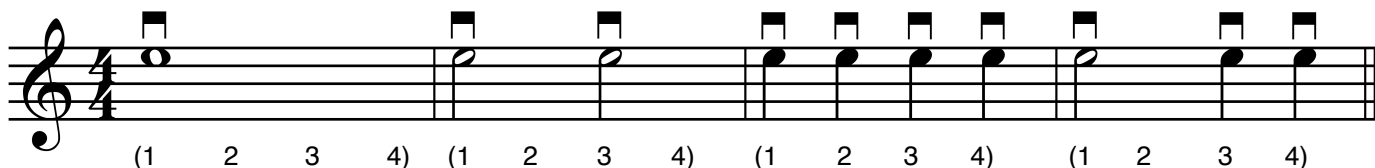
Place the tip of your third finger behind the third metal fret.

G =



Study the different note types on Page 6, then use a metronome (at 60-80bpm) and count out loud as you play these examples with your teacher:

 = Pick the string down toward the ground.





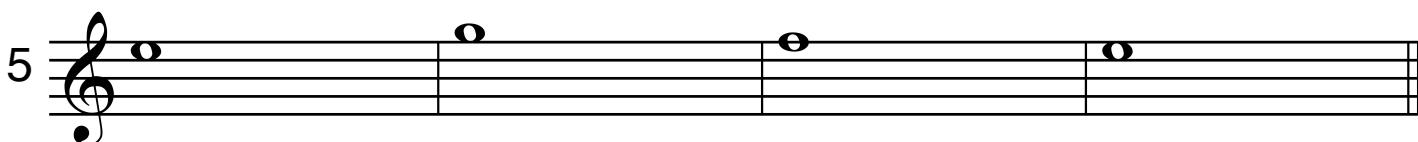
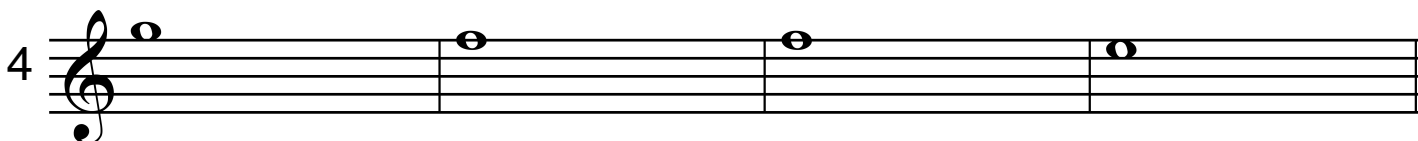
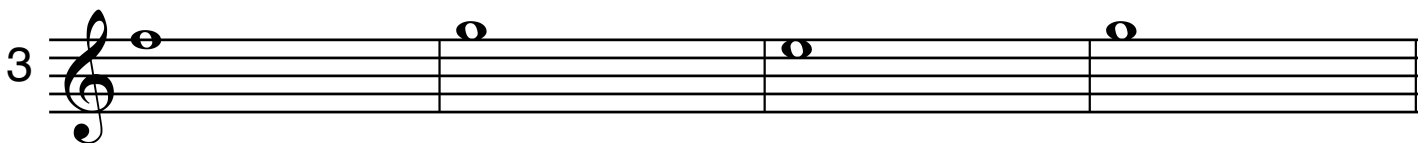
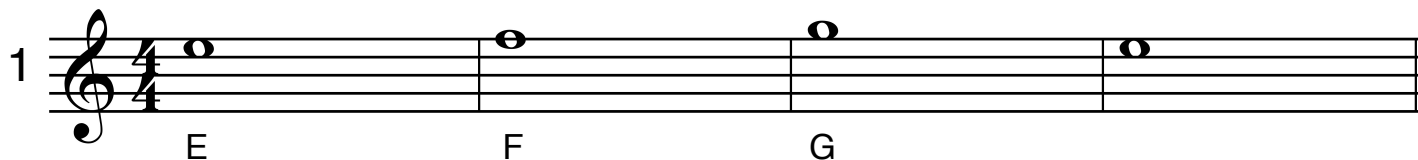
THE GUITAR LESSON COMPANION

by Susan Palmer

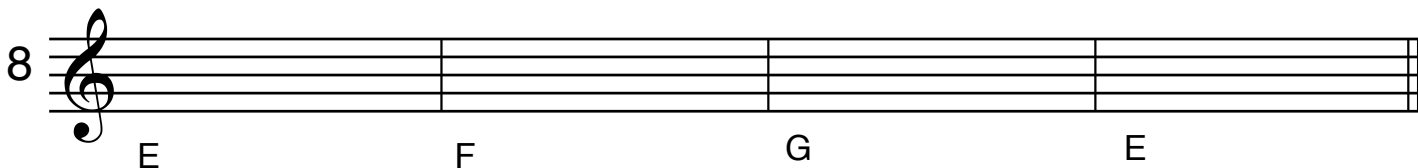
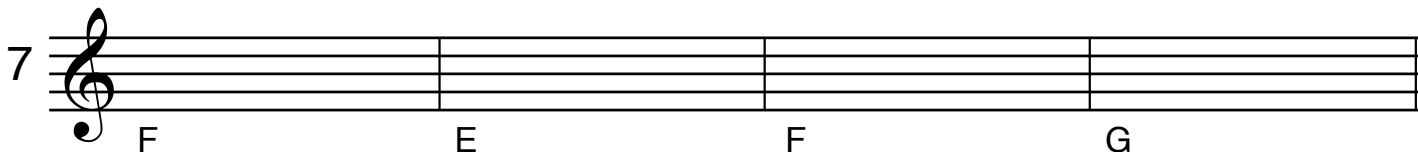
Volume One, Second Edition

NOTE IDENTIFICATION WORKSHEET

Write the name of each note under the notation, and/or play each note while saying the name aloud:



Draw each note on the staff:





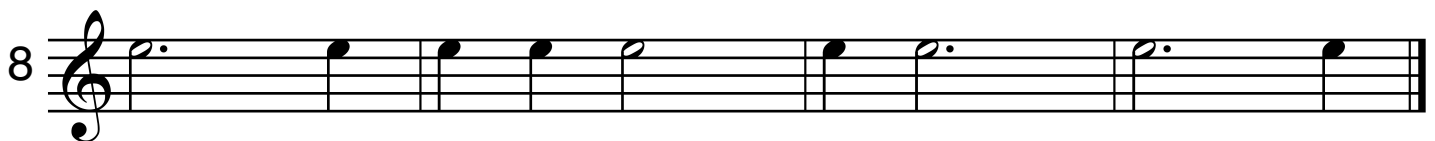
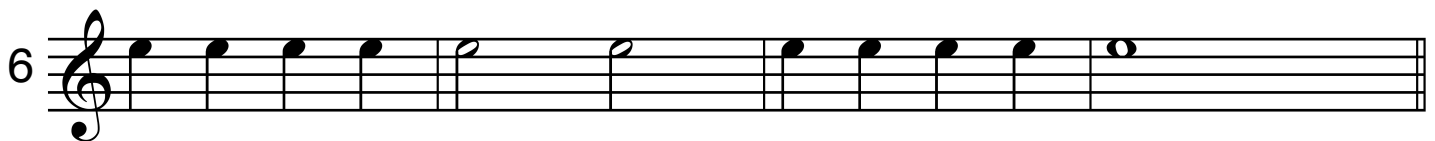
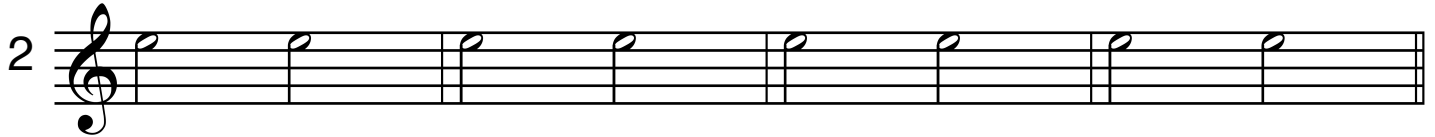
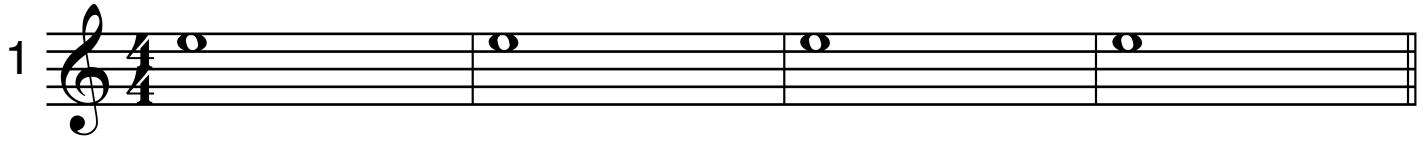
THE GUITAR LESSON COMPANION

by Susan Palmer

Volume One, Second Edition

RHYTHM STUDY

WHOLE, HALF, QUARTER, AND DOTTED HALF NOTES





THE GUITAR LESSON COMPANION

by Susan Palmer

Volume One, Second Edition

READING STUDY

AUDIO TRACK: 2

1 **E: OPEN** **F: FIRST FRET** **G: THIRD FRET** **REST: MUTE STRING**

2

3

4

5

6

7

8